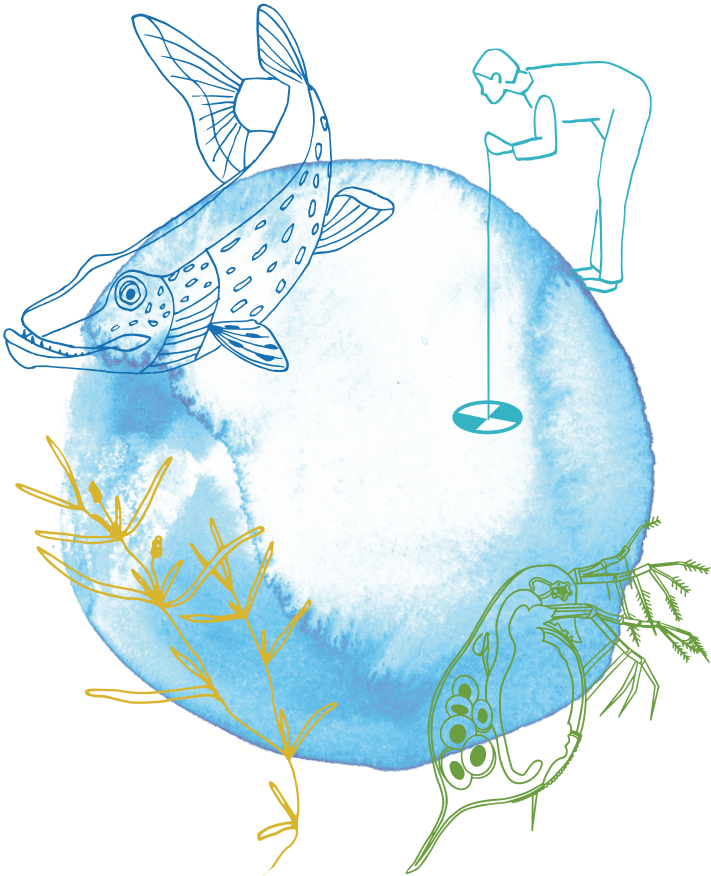


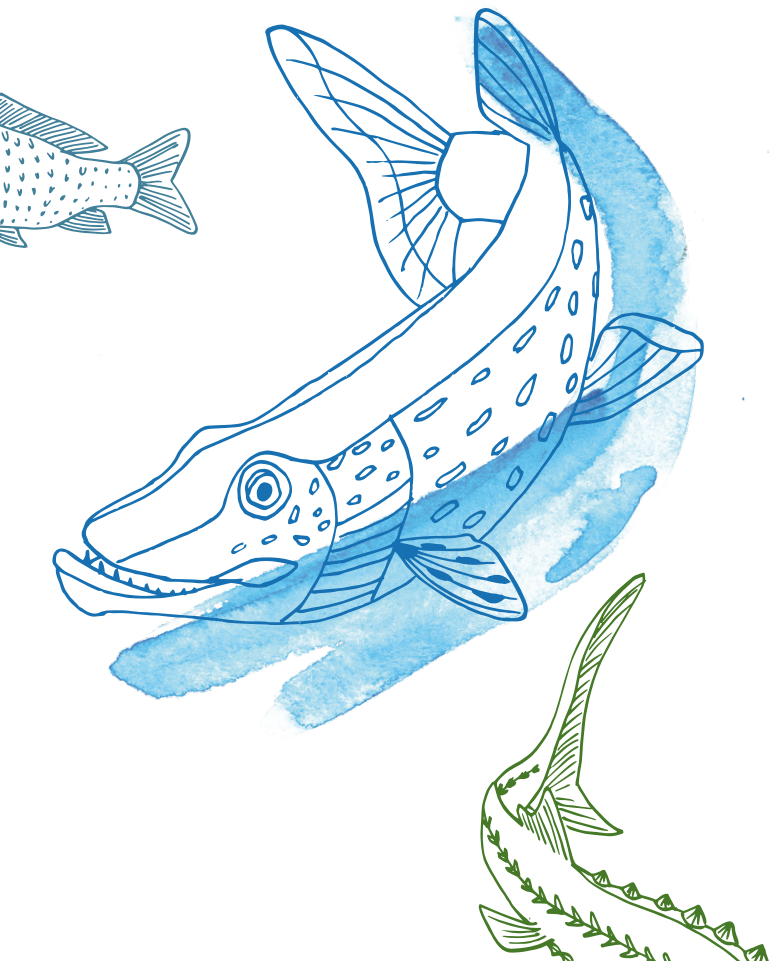
# Research for the future of our freshwaters



# Mission

Freshwaters are a vital resource for human well-being, and they host a fascinating diversity of life. But rivers, lakes, floodplains and wetlands are also among the habitats most affected by human activity – with negative impacts on their biodiversity and their ecosystem services. Climate and environmental changes are increasing the pressure on inland waters even further. Counteracting this requires a sustainable approach to managing and conserving freshwater resources and ecosystems.

“Research for the future of our freshwaters” is the mission of the Leibniz Institute of Freshwater Ecology and Inland Fisheries (IGB). We seek to understand all the fundamental processes that shape our freshwaters and their biotic communities, and investigate how these systems respond to natural and anthropogenic environmental changes. The knowledge we generate helps society to cope with current ecological and societal challenges, for the benefit of mankind and nature.



# Researching – crossing borders, bridging disciplines

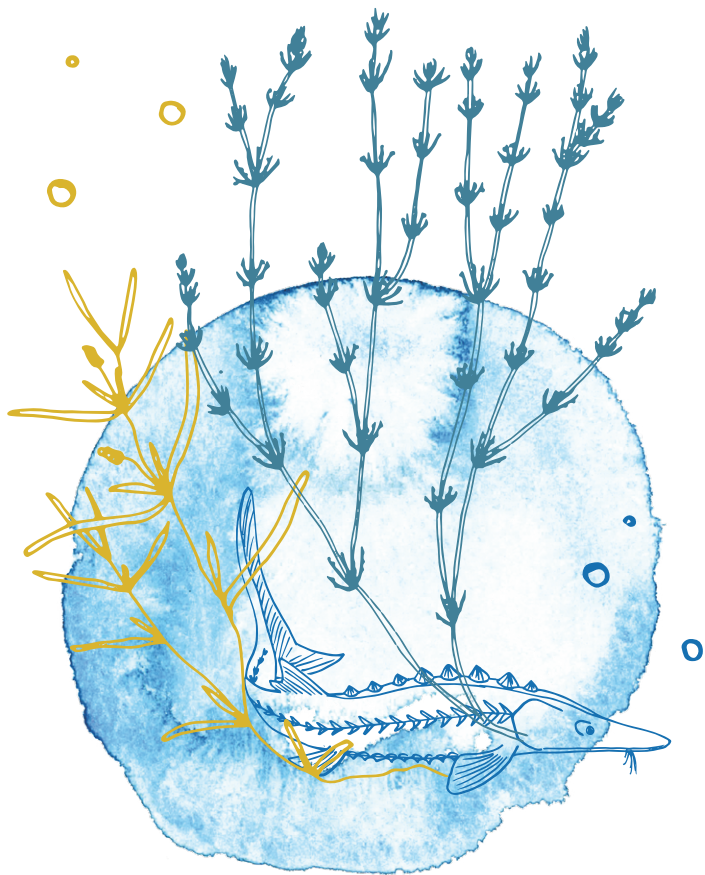
Science at IGB integrates multiple disciplines under one roof and actively incorporates user groups and affected stakeholders. At Germany's largest centre for freshwater research and one of the leading centres worldwide, more than 150 scientists investigate different aspects of rivers, lakes and wetlands. We encourage joint work on these systems to advance knowledge on topics that are more relevant to society than ever. This includes questions such as how freshwaters respond to global change, how biodiversity is changing, what ecosystem services our inland waters are providing today and in the future, and how ecosystems develop across different scales and levels. The institute's unique scientific infrastructure, its long-term environmental data and its outstanding flexibility are fundamental to our basic as well as applied research. As a member of Germany's Leibniz Association, we closely collaborate with numerous national and international universities and other partners in science and society.

**Learn more about our research**

[www.igb-berlin.de/en/research](http://www.igb-berlin.de/en/research)

**See an overview of the topics we address**

[www.igb-berlin.de/en/topics](http://www.igb-berlin.de/en/topics)



## Supporting – excellent training, dedicated teams

IGB is a diverse and inspiring workplace to conduct research. We train graduate and undergraduate students, and support the professional development of our employees at every step along their career paths. In fact, our HR development strategy was awarded the “HR Excellence in Research Award” by the European Commission and our efforts are evaluated on a regular basis. Our teams include students, doctoral candidates and postdoctoral researchers from all over the world. Thanks to our joint professorships, we are closely linked to four universities in Berlin and Brandenburg, and are actively involved in teaching. We also pass on our knowledge to young researchers through the IGB doctoral programme and in our graduate research schools. This means we not only educate professionals for academia, but also for public agencies, government administration and the private sector.

**Learn more about working at IGB**

[www.igb-berlin.de/en/working](http://www.igb-berlin.de/en/working)

**Find out more about our doctoral education**

[www.igb-berlin.de/en/doctoral-education](http://www.igb-berlin.de/en/doctoral-education)

**Current job offers at IGB**

[www.igb-berlin.de/en/jobs](http://www.igb-berlin.de/en/jobs)



## Sharing – objective information, open exchange

Research at IGB is rooted in the understanding that generally, scientific findings should become available to anyone who is interested in using them. We support the principle of open science – making knowledge accessible and transparent, and integrating feedback from the scientific community and societal stakeholders. We are happy to share our expertise, for example by discussing current water management issues in our IGB Lake Dialogue events. The IGB Academy – a workshop series – transfers research knowledge into management practice. Societally relevant findings are also presented in our own publication series, the IGB Outlines. By providing research-based policy and societal advice in consultations or panels, we support decision-making processes at local, national and international levels. Finally, we are also experimenting with transdisciplinary cooperation, e.g. involving partners from the realm of art, culture and education.

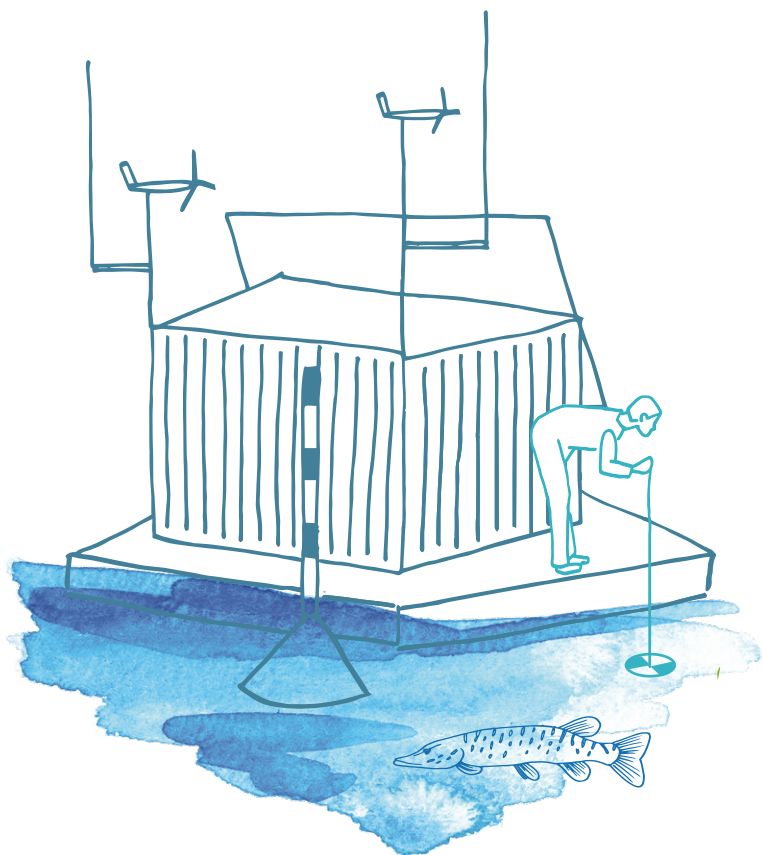
**Have a look at news, events and resources here**

[www.igb-berlin.de/en/newsroom](http://www.igb-berlin.de/en/newsroom)

**Keep up-to-date with our newsletter, published  
six times per year**

[www.igb-berlin.de/en/newsletter](http://www.igb-berlin.de/en/newsletter)





# Key figures



**5 departments:** Ecohydrology and Biogeochemistry | Community and Ecosystems Ecology | Plankton and Microbial Ecology | Fish Biology, Fisheries and Aquaculture | Evolutionary and Integrative Ecology

**365 employees**, comprising 155 scientists, 94 scientific support staff and 114 guests\*

**€23.6 million annual budget**, of which €7.5 million is from external funding\*

Leibniz Institute of Freshwater Ecology and Inland Fisheries (IGB)  
Forschungsverbund Berlin e.V.

Müggelseedamm 310 · 12587 Berlin · Germany

info@igb-berlin.de · [www.igb-berlin.de/en](http://www.igb-berlin.de/en) · **Twitter** @LeibnizIGB

## Imprint

### **Responsible parties according to the German Press Law:**

Luc De Meester, Nicole Münnich

**Editorial staff:** Angelina Tittmann

**Design:** Novamondo

**Printed on:** 100% recycled paper RecyStar Polar

© IGB 2021

\*Status as of December 2020